

AAPA



Asian American Psychological Association

2016 AAPA ANNUAL CONVENTION
University of Colorado, Denver • Denver, Colorado
August 3, 2016

CONVENTION THEME:

Beyond 'Yellow' Borders

Revealing Our Diverse Community, Expanding Our Coalition Horizon

President
Kevin Nadal

Vice President/President-Elect
Helen Hsu

Conference Co-Chairs
Noriel Lim & Gloria Wong-Padoongpatt

Co-Sponsored by:
The Asian American Student Services at CU Denver
The National Asian American Pacific Islander Mental Health Association



Welcome to the 2016 AAPA Convention in Denver!

It is our pleasure to welcome you to the Asian American Psychological Association (AAPA) annual convention. This event is the culmination of a great amount of dedicated planning, reflection, and outreach. Our theme: "Beyond 'Yellow' Borders: *Revealing Our Diverse Community, Expanding Our Coalition Horizon*" was selected to examine the identity and roles of AAPA within the larger AAPI community and from an interdisciplinary frame.

It seems fitting this year that we are meeting in Denver, Colorado, for the first time, as AAPA continues to grow in new directions. While Asian Americans have historically had larger numbers on both the West and East Coasts and Hawai'i, the increase in population in the Mountain and Midwest regions signifies the increased visibility of Asian Americans throughout our country. Today, being Asian American embodies so many different experiences, which makes our community even more beautiful and diverse.

Further, over the 50 years since the passage of the Immigration and Nationality Act of 1965, a sociopolitical community of culturally diverse Asian Americans has taken shape. Though they were promised the land of opportunity, many of our ancestors faced unexpectedly intense racial discrimination. While they originated from diverse countries, they were lumped into one racial category within the United States- which eventually developed into many stereotypes and even hierarchies between different ethnic groups.

Many recent events highlight the interconnected struggles and successes of AAPI's with other marginalized groups in the United States. The tragedies in Orlando signify the work that we need to do in battling homophobia, transphobia, Islamophobia, and the intersection of them all. The Peter Liang trial in New York City signifies our need to be more proactive in the Black Lives Matter movement and to recognize the ways that we participate in, or subtly condone, anti-Black racism.

While discussing issues like these are difficult, and sometimes emotionally exhausting, we are confident that fruitful connections will emerge as we share this opportunity to learn from one another. We also hope we can dialogue about our overlapping roles as AAPI psychologists, students, community activists, consumers, scientists, educators, caretakers, and allies.

We hope you are as excited as we are to see the incredibly varied presentations and posters featured at this year's convention. AAPA has been our cultural and professional home, a place where one can study and reflect upon topics such as culture bound syndromes, intersectionality, multidisciplinary mental health, internalized racism, and culture specific measures, all in one day. Here, we honor our pioneering AAPI founding psychologists, while also welcoming (and embracing) students and first time attendees.

Please open your mind, and let us hear your voices! Our first goal is for everyone to gain something from other attendees today- whether be it mentoring advice, research collaborations, coalition building, or others. Our second goal is to continue to converse about ways to strengthen our community and to celebrate our diverse identities and experiences.

Finally, don't forget to thank our tireless 2016 convention chairs Nori Lim, and Gloria Wong- who started planning this day for you almost the minute our 2015 convention wrapped! This would not be possible without our cadre of volunteers who organize the scholarship book drive, banquet and awards ceremonies, registration and sessions. For them, and their demonstration of the spirit of AAPA, we are eternally thankful.

Sincerely,

Kevin Nadal, Ph.D.
AAPA President

Helen H. Hsu, Psy.D.
AAPA Vice President/ President-Elect

A Message from the 2016 AAPA Convention Co-Chairs

On behalf of the 2016 AAPA Convention Committee, welcome to Denver! We are excited to hold our convention in Denver for the first time! Denver is a vibrant city that has seen a tremendous growth in the AAPI population since 2000. We hope you take advantage of your time in Denver to network, learn, collaborate, and dialogue with your fellow AAPA colleagues.

Our theme this year, “Beyond ‘Yellow’ Borders: Revealing Our Diverse Community, Expanding Our Coalition Horizon,” aims to emphasize the presidential mission of drawing awareness to the diverse identities within the AAPI community and to underscore the importance of building coalitions with other marginalized groups in the U.S. Throughout the day, our program will highlight the diversity within our community as well as AAPI’s role in the larger social reform movement. We jump start the day with a keynote address by Dr. Ali Mattu, Ph.D., who will discuss social justice in the era of social media. As the day continues, you will find great diversity in the work of AAPA’s members and colleagues; we put together a number of excellent presentations and an extensive poster session showcasing cutting-edge research. A panel discussion of AAPA division representatives on social justice and action, anchored by Dr. Alvin Alvarez, Ph.D., will serve as a capstone to our afternoon sessions.

Be sure to join in on networking opportunities, including one of several lunchtime discussion groups and the mentor-mentee reception, as well as our afternoon reception and poster session. We hope you come close the day with us at the annual AAPA evening banquet held at Aloy Modern Thai Restaurant. The family-style dining experience will provide a great opportunity to solidify new relationships or reconnect with old friends! On Thursday afternoon, come play and/or talk smack at our 7th annual Student vs. Faculty basketball game. Don’t forget to connect your social networks to this year’s programming. Follow @AAPAonline on Twitter and tweet [#aapa2016](#) to let your friends and family know what you’re excited about at this year’s convention! Plus, be sure to “Like” Asian American Psychological Association on Facebook, where you can view live status updates and follow convention photos.

Lastly, we want to send out a huge thank you to our fantastic Convention Committee. Without their energy and many months of work, this event would not be possible! Their badges are marked with a special ribbon so please take a moment to thank them with a smile and a high-five. Again, thank you for joining us and we hope you have an enjoyable, enlightening, inspiring, and energizing experience at this year’s Convention!

Nori Lim, PhD and Gloria Wong-Padoongpatt, PhD
2016 AAPA Convention Co-Chairs

Convention Day Details

CONVENTION SITE

Tivoli Student Union

University of Colorado – Denver (Auraria Campus)

900 Auraria Parkway, Denver, CO 80202

DIRECTIONS

From Denver International Airport:

If you are traveling by plane and flying directly into the Denver International Airport, you can reach the convention site by taxi, which will cost approximately \$65-\$85. You can also reach the convention site by taking



the light rail **University of Colorado A Line** to the *Denver Union Station* (\$9). The Tivoli Student Union is 0.8 miles away from the Denver Union Station.

Driving to the Tivoli:

Southbound: Take 1-25 to Speer (Southbound) exit. Remain in the right hand lane and turn right on Auraria Parkway (Westbound). At 9th Street turn left and get in the right hand lane. Turn right into the Tivoli Visitor Parking Lot or left towards the Tivoli Parking Structure.

Northbound: Take I-25 to Auraria Parkway. Turn right on 9th Street and remain in the right hand lane. Turn right into the Tivoli Visitor Parking Lot or left towards the Tivoli Parking Structure.

Downtown: Take Speer Boulevard to Auraria Parkway. Turn left on 9th Street (1st stoplight) and remain in the right hand lane. Turn right into the Tivoli Visitor Parking Lot or left towards the Tivoli Parking Structure.



Parking:

The Tivoli Parking Structure is right across Walnut Street from the convention site—the Tivoli Student Union. For more information, please check out the following link: <https://www.ahc.edu/about-auraria-campus/parking-transportation-services-about-auraria/>

MAP OF THE TIVOLI

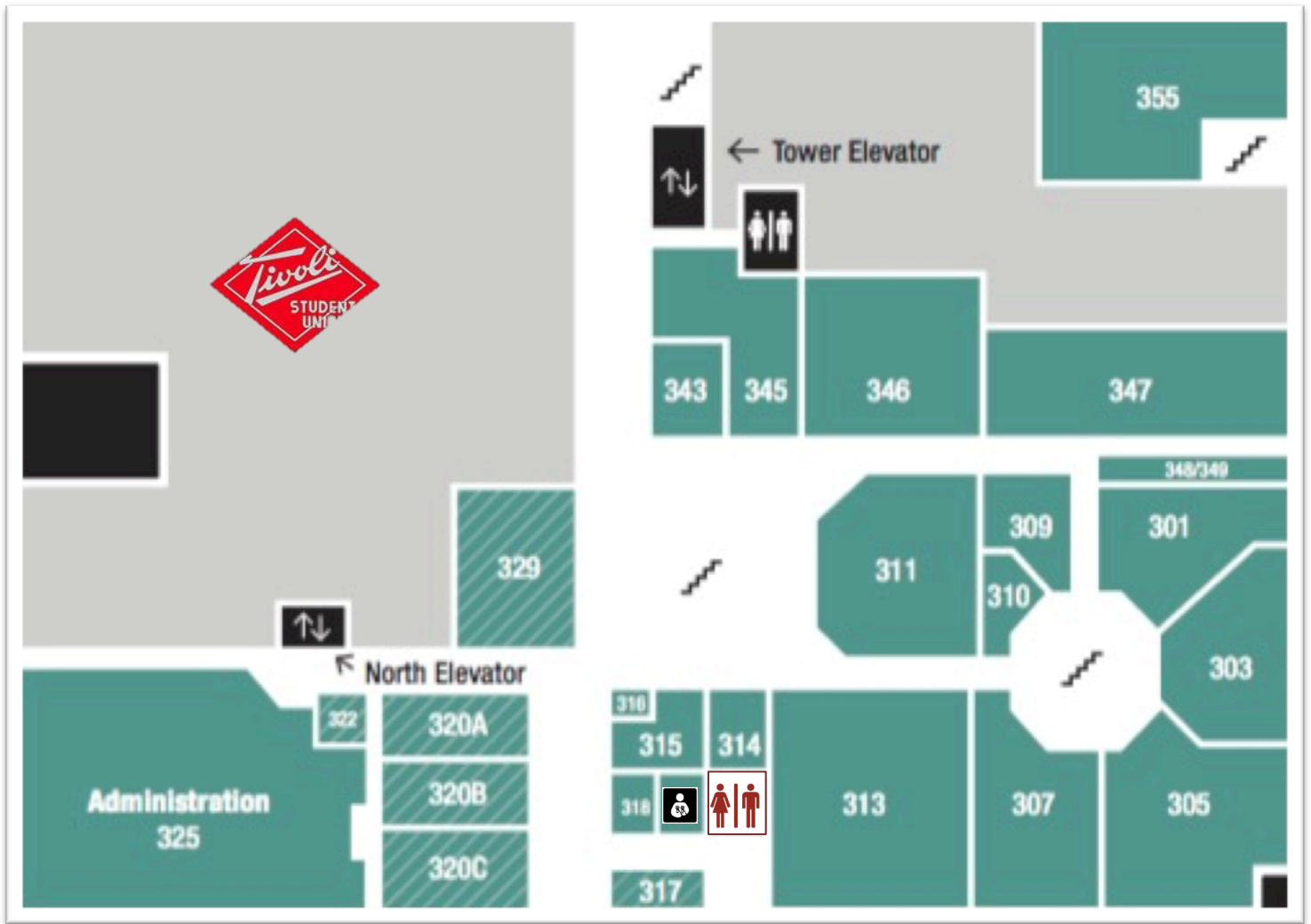


A Lactation Room is located in Room 319.

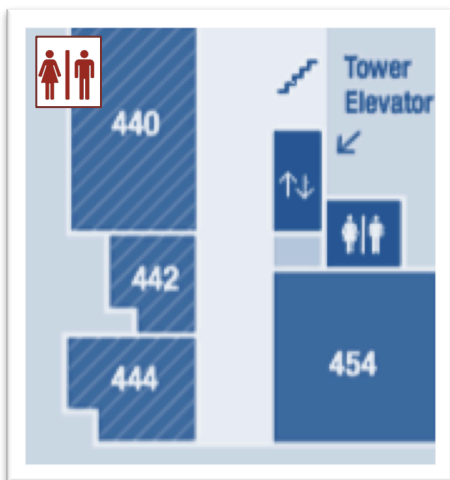


Some restrooms on the 3rd, 4th, and 6th Floors of the Tivoli are designated Gender-Inclusive.

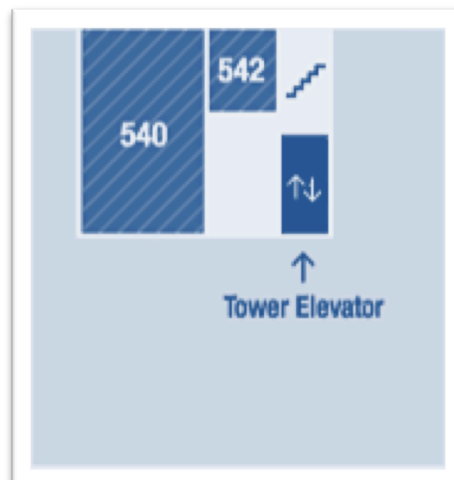
3rd Floor



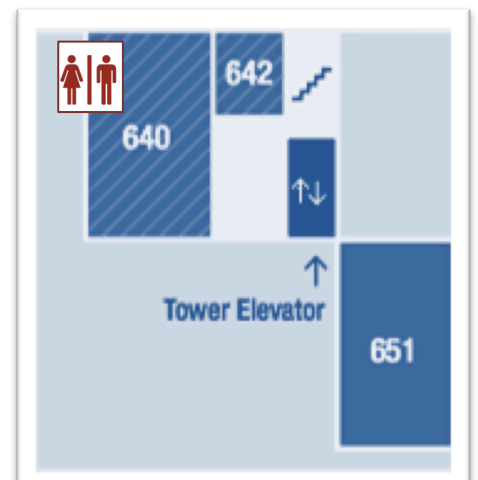
4th Floor



5th Floor



6th Floor



To access event spaces on floors 4–7, use the Tower Elevator

Join us at 7pm for the annual AAPA
BANQUET



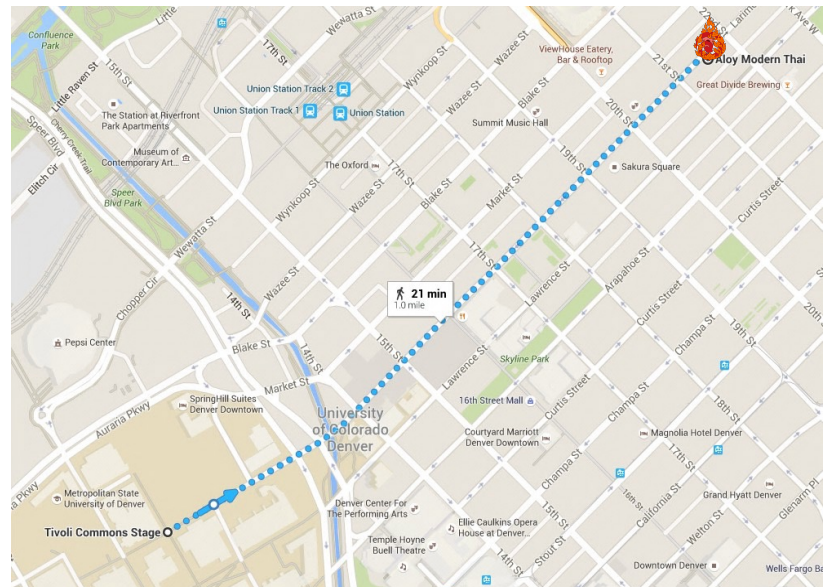
Aloy

Modern Thai

2134 Larimer St, Denver, CO 80205

Head Northeast on Larimer. Continue on Larimer
for about 1 mile, and arrive at 2134 Larimer Street.
The restaurant will be on the right.

*Please note that there will be NO
transportation provided to the banquet
location.*



FOOD & DINING OPTIONS @ THE CONVENTION

AAPA will provide a continental breakfast and afternoon coffee and snacks. Food will be served at the lounge area of Room 320. Lunch, for attendees who pre-ordered them, will also be served in this area. The Tivoli Student Union also has a variety of restaurants for additional dining options.

BOOK SALE

The Book Drive committee is pleased to announce that over 50 publishers have donated over 110 titles this year! Thank you to all of our generous contributors who have been so supportive of our cause. We would like to thank Gloria Wong-Padoongpatt, her team of research assistants, and Taylor Lott for their generous assistance.

We are excited to feature several genres, including clinical and counseling psychology, social psychology, self-help, politics, children's books, adult fiction, Asian American studies, sociology, poetry, education, and cookbooks. Some notable authors whose books will be sold include: Andrew Aoki, Brian Barry, Ping Chen, Shilpa Dave, Jay Deshpande, Chitra Banerjee Divakaruni, Nicholas Gulig, Nagayama Hall, C. Winter Han, Wei-Chin Hwang, Joseph LeDoux, Chang-Rae Lee, Frederick Leong, Rodney L. Lowman, Jeffery Mio, Celeste Ng, Sumie Okazaki, Wang Ping, Matthew Salesses, Marjorie Sarnat, Lisa See, Derald Wing Sue, Okivoshi Takeda, Paul Yoon, Nolan Zane, and Jeffery Zeig.

Several 2015 and 2016 releases will be available for purchase, including: *Evidence-Based Psychological Practice with Ethnic Minorities: Culturally Informed Research and Clinical Strategies*, by Nolan Zane, Guillermo Bernal, & Frederick Leong (APA); *The Hundred Year Flood* by Matthew Salesses (Little A); *Geisha of a Different Kind: Race & Sexuality in Gaysian America*, by C. Winter Han and *Desi Hoop Dreams: Pickup Basketball and the Making of Asian American Masculinity* by Stanley I. Thangaraj (NYU Press); *Clinical Mental Health Counseling: Fundamentals of Applied Practice* by Donna Sheperis and Carl Sheperis (Pearson); *Diversity and Leadership* by Jean Lau Chin (Sage); *Chord* by poet Rick Barot (Sarabande Books); *South Korea's Education Exodus: The Life and Times of Study Abroad*, edited by Adrienne Lo, Nancy Abelmann, Soo Ah Kwon, and Sumie Okazaki (University of Washington Press); *Love the Stranger* by Jay Deshpande and *North of Order* by Nicholas Gulig (YesYes Books).

All purchases made at the Book Drive will help fund AAPA student travel to next year's convention. Please be sure to stop by the Book Drive to help support our students! Several forms of payment will be accepted.

AAPA 2016 Book Drive Sponsors:

Academic Press
Akashic Books
American Psychological Association
Bantam Books
Better Homes and Gardens
Bloomsbury
Brunner/Mazel, Inc.
Cambridge University Press
Candlewick Press
Coffee House Press
Copper Canyon Press
CreateSpace Independent Publishing Platform
Dover Publications
Eastern Washington Univ. Press
Global Book Publisher
Grand Central Publishing
Guilford Press
HarperCollins Publishers
Hay House Publishing
Impetus Books

John Wiley & Sons, Inc.
LFB Scholarly Publishing, LLC
Little A
Lorenz Books
Manic D Press
McGraw-Hill
New York University Press
Northfield Publishing
Oxford University Press
Paradigm Publishers
Pearson
Penguin Books
Penguin Classics
Penguin Press
Plume
Polity Press
Princeton University Press
Random House
Riverhead Books
Routledge Publishing
Sage Publications Inc.

Sarabande Books
Scholastic
Shell Education
Simon & Schuster
St. Martin's Press
Stewart, Tobar, & Chang
StirFry DVD
Teachers College Press
Touchstone Books
Tuttle Publishing
University of Georgia Press
University of Illinois Press
University of Pittsburgh Press
University of Washington Press
VDM
Viking Press
Vintage Press
Westview Press
Wings Press
YesYes Book



**CONTINUING EDUCATION
(FREE)**



We are proud to announce that we will offer up to 3 free CEs to attendees of three sessions (1 CE/session) in this year's convention! The selected sessions are indicated below.



UNIVERSITY of
DENVER

CENTER FOR PROFESSIONAL DEVELOPMENT

This program is approved for 3.0 hours of continuing education. The University of Denver, Graduate School of Professional Psychology (GSPP) is approved by the American Psychological Association to sponsor continuing education for psychologists. GSPP maintains responsibility for this program and its content.

REGISTRATION, BREAKFAST, and EARLY BIRD ACTIVITY: 7:30AM – 8:30AM
Room 320 Lounge

Please proceed to Room 320 Lounge to collect your registration information, then meet old and new friends, and grab some breakfast. Meet, greet, and mingle with current, past, and emerging leaders of AAPA during the early bird reception; this is a great networking opportunity for students and early career professionals.

WELCOME REMARKS & ANNOUNCEMENTS: 8:45AM – 9:00AM
Room 320

Opening remarks by Drs. Noriel Lim and Gloria Wong-Padoongpatt, 2016 AAPA Convention Co-Chairs, and greetings by Dr. Kevin Nadal, President of AAPA, and Dr. Helen Hsu, Vice President of AAPA.

KEYNOTE ADDRESS: 9:00AM – 10:00AM
Room 320

DR. ALI MATTU, PHD

Dr. Ali Mattu is a clinical psychologist at the Columbia University Medical Center where he specializes in the treatment of anxiety. Outside of the hospital, Dr. Mattu focuses on translating psychological science into practical applications people can use to make their lives better. He hosts THE PSYCH SHOW on YouTube, created the award-winning Brain Knows Better Blog, and contributes to television programs as well as pop culture convention panels.

Dr. Mattu is known as a “forward thinker” in the field of psychology and was named one of The Mighty’s mental health heroes of 2015.



BREAKOUT SESSION #1
10:10AM – 11:10AM

ROOM 320

Interactive Session – A Multi-Modal Intervention Model for South Asian American Women Survivors of Intimate Partner Violence (1 CE)

Preet Kaur, MA, The George Washington University
Uma Millner, PhD, Boston University



Intimate partner violence (IPV) is a serious and highly prevalent concern among the South Asian American community, but there is a paucity of research examining IPV experiences and subsequent mental health service utilization within this community. The presenters will provide a conceptual framework on this issue that integrates collaborative dialogue among participants on the sociocultural contexts that inform attitudes and responses to gender-based violence within this community. Additionally, the presenters will outline a proposal for an online platform delivering a brief culturally - specific trauma intervention that aligns with the task-shifting model of mental health treatment.

ROOM 440/540

Invited Session – Asian Americans and Problematic Drinking: Current Trends, Future Directions and Translational Implication

Derek Iwamoto, PhD, University of Maryland – College Park, 2014 AAPA Early Career Award Winner

The bulk of the literature on Asian Americans reports that this population is relatively low risk for alcohol abuse; however, within-group differences in alcohol use among Asian Americans have been largely overlooked. My

research has focused on this area of research by examining the socio-cultural determinants and mechanisms of problematic drinking trajectories among Asian Americans. In addition my work has identified high-risk sub-groups of Asian American young adults who abuse alcohol and experience alcohol-related problems at disproportionately higher rates compared to other racial groups. Current trends, future directions and translational implications will be discussed.

ROOM 442

Symposium – Gay Filipino Men: Dating/Relationships in Post-Same Sex Marriage Ruling Era

Gregory Desierto, PsyD, WestCoast Children's Clinic

Kevin Nadal, PhD, City University of New York

Rani Marcos, CIIS

Contemporary Filipino American and homosexual identities and issues in light of recent American gay civil rights movement, continues to be an understudied area in the field of psychology, sociology, ethnic studies, and queer theory. This symposium will include three panelists who will present personal subjective experiences and stories to highlight ways that the U.S. Supreme Court same-sex marriage ruling in June 2015 have impacted their Filipino and homosexual identities, as well as their personal and professional lives. How has this ruling shaped their thoughts, views, hopes, and dreams about their cultural identity, dating life, relationships, and marriage? In what ways have this political movement impacted their sexuality, sexual orientation, and their relationship and identification with Filipino American culture? Panelists will attempt to address these questions and weave their phenomenological and subjective experiences to critical theory, queer theory, and ethnic studies. Through the panelists' stories and phenomenological experiences, the audience will gain an appreciation for and develop cultural humility and openness to the complex intersection of Filipino American and homosexual identities. Future research and implications for clinical and political action will be discussed.

ROOM 640

Interactive Session – Visibility and Invisibility II: Critical Encounters and Empowerment

Janet Chang, PhD, Smith College

Frederick Leong, PhD, Michigan State University

Sherry Wang, PhD, Santa Clara University

Byron Zamboanga, PhD, Smith College

This interactive session is designed to facilitate constructive dialogue about overcoming the visibility and invisibility of Asian American faculty and students. The session will serve as a forum to discuss the importance of mentoring and understanding how to navigate the academy. Discussion will also center on the politics of positions, motives, and morals that influence academic decision making and leadership. The session will focus on strategies of empowerment, including developing a productive professional identity and support system, responding to (rather than reacting to) critical encounters, and identifying levers for change in the academy.

ROOM 329

Symposium – Cultural Socialization: Blending Cultures and Ethnic Boundaries

Amy Mee-Ran Kobus, PhD, Oregon Health & Science University

Sumie Okazaki, PhD, New York University

Amy Kobus, PhD, Oregon Health & Science University

Amy Harms, University of Minnesota

Richard M. Lee, PhD, University of Minnesota

In this symposium, we report on three studies, using varying methodologies, to investigate cultural socialization in diverse family contexts. The first presentation uses focus groups and individual interviews to examine how second generation Asian-heritage parents engage in racial-ethnic socialization of their school age children. The second presentation uses secondary analysis of a national survey of adoptive parents to describe demographics, social

characteristics, and cultural socialization practices in families with transracial international adoptions across multiple countries of origin. The third presentation uses qualitative interviews with adult Chinese adoptees to explore ethnic socialization experiences and the development of ethnic identity development.

BREAKOUT SESSION #2 11:20AM – 12:20PM

ROOM 320

Interactive Session – AAPI Therapist Self-Disclosure of Identities (1 CE)

Yun Lu, MA, University of Maryland – College Park

Brian Taehyuk Keum, MA, University of Maryland – College Park

Jeffrey G. Yeung, MA, University of Maryland – College Park



Theoretical and empirical work has mostly focused on White therapists conducting a self-disclosure in broaching the topic of racial/ethnic differences with clients of color (Hays, 2016; Constantine & Kwan, 2003). The dialogue on multicultural competency has been silent about how therapists of color, such as AAPI therapists, negotiate their socio-politically oppressed identities when working with diverse clients. This interactive session aims to explore AAPI therapists' experiences related to explicitly bringing attention to their identities when they (a) hold international identities, (b) work with White clients, and (c) bring in intersectional identities ranging from apparent to invisible and/or concealable statuses.

ROOM 440/540

Invited Session: 2016 AAPA Dissertation Panel

Alicia Ibaraki, PhD, University of Oregon

Gloria Wong-Padoongpatt, PhD, University of California - Davis

Stephanie Carrera, PhD, Iowa State University

Mechanisms that Perpetuate Health Care Disparities: Physician Stereotypes and Bias

Alicia Ibaraki, PhD, University of Oregon

Although Asian Americans are the only racial group for whom cancer is the leading cause of death, physicians recommend cancer screening to Asian Americans at nearly half the rate as White Americans. This study tests a mechanism that may underlie low recommendation rates based on a conceptual model that integrates the literature on information processing and decision making with Asian American stereotypes, specifically the Model Minority and the Perpetual Foreigner. The sample consisted of 167 primary care physicians who made cancer screening referrals in response to clinical vignettes. Implicit and explicit attitudes about Asian American stereotypes were assessed and used as predictors of screening behavior.

Impact, Mechanisms, and Individual Variations in the Stress Response to Racial Microaggressions among Asian Americans

Gloria Wong-Padoongpatt, PhD, University of California - Davis

Researchers are interested in examining the negative impact of racial microaggressions on psychological and physical health, yet only a few studies have uncovered the mechanisms by which these incidents affect mental and physical well-being. This study 1) experimentally tested the racial nature of the microaggression event, 2) examined threats to self-concept as possible mediators of the microaggression-generated stress, and 3) investigated individual differences in anger tendency and sensitivity to rejection as moderators. Findings indicated that race of the perpetrator had an impact on stress in that a White perpetrator elicited more stress compared to an Asian American perpetrator. Experience with a White perpetrator, compared to an Asian American perpetrator,

lowered implicit self-esteem, which resulted in more stress. A three-way interaction between gender, perpetrator race, and rejection sensitivity was found. Implications for the well-being of marginalized individuals and intergroup interactions across social hierarchies are discussed.

Interpersonal risk factors, shame, and depression among Asian Americans: A longitudinal study of perfectionistic family discrepancy as a moderator

Stephanie Carrera, PhD, Iowa State University

This study extended Joiner's (2005) Interpersonal-Psychological Theory of Suicide to Asian Americans' experiences with depression. A mediation and moderation of the direct effect model was tested, in which a) interpersonal shame mediates the relations between thwarted belongingness, perceive burdensomeness, and depression; and b) perfectionistic family discrepancy moderates the direct effects of thwarted belongingness and perceived burdensomeness on depression. Results supported the mediation hypothesis and demonstrated that Asian Americans with high family expectations for perfectionism may be at higher risk for depression that stems from interpersonal shame, thwarted belongingness, and perceived burdensomeness. Future research directions and counseling implications will be discussed.

ROOM 442

Symposium – Intersectionality at Work: LGBTQ Asian Americans in the Media, Clinical Encounters, and Academia

Saeromi Kim, PhD, DLGBTQQ

G. Nicole Rider, PhD, DLGBTQQ

Kevin Nadal, PhD, President, AAPA

The common theme of this symposium is to bring awareness to the particular experiences and challenges of Lesbian, Gay, Bisexual, Transgender, and Queer (LGBTQ) Asian Americans in various contexts and from divergent points of view. The first presenter will expose the impact of mass media representations of Asian Americans and transgender individuals as sexualized identities. The second presentation will focus on self-disclosures in clinical encounters on a college campus from the perspective of an out, queer Asian American psychologist. The third presentation will highlight the unique challenges of LGBTQ Asian American scholars. Potential applications for increasing awareness and advocacy will be addressed.

ROOM 640

Interactive Session – From Graduate Student to Early-Career Professional: Lessons and Wisdom among AAPI Women

Linh Luu, MS, Lehigh University

Grace Kim, PhD, Wheelock College

Khanh Dinh, PhD, University of Massachusetts, Lowell

Catherine Hsieh, PhD, University of California, Irvine

Diane Hayashino, PhD, California State University, Long Beach

Jessica Liu, MA, Lehigh University

Chu Kim-Prieto, PhD, The College of New Jersey

Tiffany Chang, MA, Indiana University, Bloomington

Unlike many of the milestones that are being supported/facilitated by graduate programs, transitioning out of student role into early-career professional, is rarely discussed. Given the growth of AAPI women seeking and completing graduate degrees in psychology, there is an increasing need to better understand the experiences of this group. The purpose of this session is to address considerations and challenges, and to share wisdom for AAPI women who transition(ed) from graduate students to early-career professionals. With a group of diverse panelists in regard to ethnicity and career trajectories, the topic will be discussed in light of intersectionality of different identities.

ROOM 444

Interactive Session – Asian-Heritage Parents, Racial Socialization, and Discrimination: When a Research Topic Becomes Real

Tai Chang, PhD, Alliant University, San Francisco

E.J.R. David, PhD, University of Alaska, Anchorage

Lisa Kiang, PhD, Wake Forest University

Richard M. Lee, PhD, University of Minnesota

In a demographically diverse country such as the United States where the Asian-heritage population is increasing (Pew Research Social and Demographic Trends, 2012), socializing children over issues regarding race, ethnicity, and culture is central to their development. In this interactive session, we bring together three scholars whose research has focused on discrimination and/or parental racial and cultural socialization. The presenters are also parents of young children. We will consider how our academic and personal worlds intersect, and explore what this intersection means both for our research and personal lives in understanding and preparing our children to face discrimination.

ROOM 329

Symposium – We Broke the Bamboo Ceiling, Now What? Lessons Learned from Filipino American Leaders

Krista Chronister, PhD, University of Oregon

Alvin Alvarez, PhD, San Francisco State University

Richelle Concepcion, PsyD, Tripler Army Medical Center

The purpose of this symposia is to present the unique leadership experiences of, and lessons learned, from three Filipino American psychologists who inhabit leadership positions within academic and military health care institutions. Each panelist will share their experiences and vantage points as leaders in their respective institutions, and share honestly and openly the opportunities and challenges once the “bamboo ceiling” has been broken. Their leadership experiences are informed by the intersections of their diverse gender and ethnic identities, age, and work contexts.

LUNCH & LUNCHTIME DISCUSSIONS

12:20PM – 1:30PM

Box lunches are available in the foyer of Room 320. After picking up your lunch, you are warmly invited to join one of the discussion groups listed below:

Room 440/540 – Division on Students

Room 442 – Division on LGBT Issues

Room 640 – Division on Practice

Room 444 – Division on South Asian Americans

Room 329 – Division on Filipino Americans

BREAKOUT SESSION #3

1:40PM – 2:40PM

ROOM 320

Symposium – Empirically-Based Strategies for Enhancing Cultural Inclusion in Evidence-Based Treatments (1 CE)

Cindy Y. Huang, PhD, Asian American Center on Disparities Research, University of California, Davis

Nolan Zane, PhD, Asian American Center on Disparities Research, University of California, Davis
Lauren Berger, PhD, Asian American Center on Disparities Research, University of California, Davis



Little attention has been paid to determining the social validity of evidence-based treatments by ethnocultural minority groups. Social validity is defined as the perceived social importance and acceptability/appropriateness of an intervention by an ethnocultural group. It has implications for treatment utilization and response, as it may impact the willingness of a client to engage in mental health treatment or follow through with treatment recommendations. This symposium will present two studies that examined the social validity of two evidence-based treatments for adults and children, and a third that investigated a critical treatment process, self-disclosure, and its potential association with social validity.

ROOM 440/540

Invited Session – Paving the Way for Future Leaders: AAPA Leadership Pipeline and Development

Nellie Tran, PhD, San Diego State University

Richelle Concepcion, PsyD, Tripler Army Medical Center

This presentation will explore leadership among Asian Americans and the Leadership Fellows Program. The co-chairs will discuss what leadership means and what leadership development looks like within the program.

ROOM 442

Interactive Session – Advocacy, Workforce Development, Cultural Relevance and More!

Christina Shea, MS, Richmond Area Multi-Services, Inc.

Flora Chan, PsyD, Richmond Area Multi-Services, Inc.

Richmond Area Multi-Services, Inc. (RAMS) as a lead organization, Asian and Pacific Islander Mental Health Collaborative (APMHC) partners with three API groups (Samoan Wellness Initiative, Filipino Mental Health Initiative, Southeast Asian Mental Health Initiative) and six grass root community based organizations, strive to outreach, provide prevention and early intervention services, and anti-stigma campaign to under-represented API communities in San Francisco. We will present our history and effort in the past three years, our successes and challenges, and our hope and plan in the next three years. We will invite feedback and discussion on culture, resiliency, trauma, immigration, bias.

ROOM 640

Symposium – The Future of Asian American Psychology

Gordon Hall, PhD, University of Oregon

E. J. David, PhD, University of Alaska, Anchorage

Sumie Okazaki, PhD, New York University

Frederick Leong, PhD, Michigan State University

Asian American psychology has existed as a discipline for over 40 years but has remained on the periphery of psychology. Asian Americans have typically been an afterthought in research and have been added onto research to demonstrate how they are similar to or different from other groups. There has been limited research on the unique characteristics of Asian Americans or the diversity within and among Asian American ethnic groups. The focus of this symposium will be on research approaches that capitalize on the nuances of Asian American groups and on the diversity of Asian Americans in domestic and global contexts.

ROOM 444

Interactive Session – Multiracial Asian Americans: The Meanings of being Mixed

Alicia del Prado, PhD, The Wright Institute

Multiracial Asian Americans are a growing community in the United States. A multiracial Asian American is defined as someone who has heritage of an Asian background and one or more additional racial backgrounds, such as

White, Black, or Native American. Despite the increasing numbers of this population, training for psychologists regarding their unique and shared psychological experiences is lacking. Therefore, this session will cover the psychosocial issues that are common for multiracial Asian American persons, especially as they pertain to identity, strengths, discrimination, and mental health. Furthermore, clinical tools will be provided for effectively serving and advocating for this community.

ROOM 329

Interactive Session – Across Psychological Borders: Engaging South Asian Americans in Multidisciplinary Mental Health Work

Hina Pant, PhD, Columbia University

Ulash Thakore-Dunlap, MS, The Wright Institute

Ankita Krishnan, BA, Purdue University

Puni Kalra, PhD, New Perspectives Coaching & Consulting Services, LLC

Preet Kaur Sabharwal, MA, American School of Professional Psychology at Argosy University

The purpose of this interactive panel session is to discuss ways in which mental health professionals and educators engage with South Asian Americans around issues such as therapy, advocacy, community participation, and graduate school training. The panelists will draw from their personal experiences to discuss what makes this work challenging and uniquely rewarding, along with some insights about ways in which South Asian American representation can be increased across different approaches to the learning and practice of Psychology. At the end of this discussion, the facilitator will invite the audience to share their experiences on this issue and/or ask questions so as to have a dialogue on better ways to support the South Asian community.

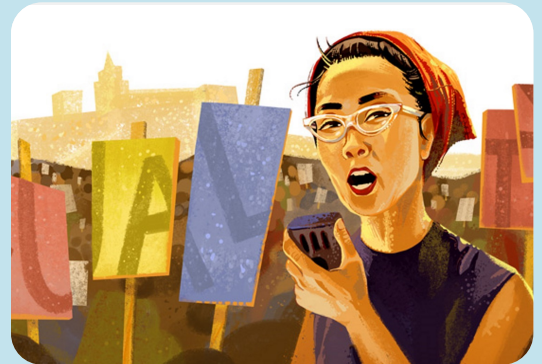
CLOSING KEYNOTE – SPECIAL SESSION ON SOCIAL JUSTICE: 2:40PM – 3:40PM

Room 320

This Special Session on Social Justice will directly address this year's theme. We invited a panel of representatives from five AAPA divisions to discuss how they participate in social activism. Panelists will share personal experiences with social justice, current issues they are addressing, and their vision for future endeavors. They also will give suggestions about how AAPA members can become more involved in social justice.

PANELISTS: *Grace Kim (DoW, APA Division 35/Section 5); Alicia del Prado (DoFA); Puni Kalra (DoSAA); Saeromi Kim (DLGBTQQ); and Ming Tu (DoS).*

DISCUSSANT: *Dr. Alvin Alvarez.*



SNACK BREAK: 3:40PM – 3:50PM

Room 320 Lounge

Take a break and join us for afternoon snacks and refreshments!

POSTER SESSION & JUDGING: 3:50PM – 4:50PM
Room 320

* Poster presenters should put up their posters between 7:30-8:30am. *Posters will be displayed throughout the day (8:30am -4:50pm).* Presenters should plan to stand next to their posters to discuss their work from 3:50-4:50pm. Presenters should begin to take down the posters at 4:50pm.

Listed in Alphabetical Order:

- 1 **A Human Science Approach to API LGBTQI Sexual Identity**
Presenter: Inthava Bounpraseuth, M.A.
- 2 **Acculturation, Cultural Beliefs, and Risky Behaviors: Examining Asian and Pacific Islander Youths' Sexuality**
Presenters: Sheena Balolong Publico, B.S., Marilisa Raju, B.A., Shawndeeia Drinkard, B.A., Cristina Minana Perez, M.S., Michi Fu, Ph.D.
- 3 **After Political Violence: Psychological Adjustment among Adolescents and Young Adults in Hong Kong**
Presenters: Nathan Rhees, Ka Yan Danise Mok, M.A.
- 4 **An Exploration of Mental Health Stigma in Filipino Americans**
Presenters: David Lairmore, M.A., Norah Chapman, Ph.D.
- 5 **Antecedents of Acculturative Family Distancing Among East Asian American Students**
Presenters: Stephanie Carrera, M.S., Meifen Wei, Ph.D.
- 6 **Asian Americans and Discrimination in Hawaii: Psychometric Assessment and Impact on Physical and Mental Health**
Presenters: Laurie McCubbin, Ph.D., Kelsea Visalli, B.A., Patty Kuo, B.A.
- 7 **Asian International Students' Country of Origin and Acculturative Stress: A Multilevel Analysis**
Presenters: Monica Oh, B.A., Marina Khan, M.A., Nancy Murdock, Ph.D.
- 8 **Balancing the Cultural Adaptation Equation: A Concurrent Examination of Acculturation and Enculturation Effects on Mental Disorders**
Presenters: Sut Yee Shirley Chan, M.A., Nolan Zane, Ph.D.
- 9 **Beyond the Trial of Peter Liang: Asian American's Civil Rights Movement in a new era**
Presenters: Shaozhuan Li, M.Ed., Jacks Cheng, Ed.M., M.A.
- 10 **Can parents identify mental health diagnoses in youth? A study of mental health literacy in Boston Chinese immigrant families**
Presenters: Emily Wu, M.D., Cindy Liu, Ph.D., Huijun Li, Ph.D., Esther Tung, B.A.
- 11 **Car Talk: Social Class, Gender, and Identity of Chinese International Students in a Midwestern College Town**
Presenters: Desiree Qin, Ed.D., Andrea Louie, Ph.D., Mingjun Xie, M.A., Shizhu Liu, M.A.
- 12 **Circles of Friends in Chinese Student Population: How Does a Large Group of Co-nationals Influence Social Adaptation of Chinese International Students?**
Presenters: Mingjun Xie, M.A., Desiree Qin, Ph.D.
- 13 **Circumstances Preceding Suicide among Asian Americans: An 11-Year Analysis of Data from the National Violent Death Reporting System**
Presenters: Y. Joel Wong, Ph.D., Shaozhuan Li, M.Ed.
- 14 **Community Matters: Internalization of the Model Minority Myth and Psychological Distress among Asian American Adolescents living in Phoenix and San Francisco**
Presenter: Annabelle Atkin
- 15 **Contraception Knowledge, Use, and Attitudes in a Sample of Southeast Asian Women in the United States**
Presenters: Ivy Ho, Ph.D., Khanh Dinh, Ph.D., Selena Tran
- 16 **Counseling Attitudes and Stigma Among Tongan Americans**

- Presenters: Ofa Hafoka, G.E. Kawika Allen, Ph.D.*
- 17 **Counseling stigma and coping styles among Polynesian Americans**
Presenters: Hokule'a Conklin, Ph.D., Kawika Allen, Ph.D., Ofa Hafoka, B.A., Davis Kane, B.A.
- 18 **Culture-Specific Perspectives of HIV/AIDS Stigma in Chinese American Immigrants in New York City**
Presenters: Yuqi Chen, B.S., Jeffrey Wong, B.S., Xiang Zhou, B.S., Jingyang Mei, B.S., Melanie Yu, B.A., Minda Huang, B.A., Katherine Mason, Ph.D.
- 19 **Culture-Specific Stigma Measure: Initial Psychometric Validation among a Community Sample**
Presenters: Debbie Huang, M.P.H., Jeffrey Wong, B.A.
- 20 **Depressive and anxiety symptoms as a moderator between perceived stigma towards receiving psychological help and attitudes towards seeking psychological help in Asian American college students**
Presenters: Amber Pham, Anne Saw, Ph.D.
- 21 **Differences in Sequential Eye Movement Behavior between East Asians and Westerners**
Presenters: Yen Ju Lee, M.A., Harold Greene, Ph.D., Cimone Safilian, B.A.
- 22 **Emotion Regulation of Chinese Women in Adult Romantic Relationships**
Presenters: Chao-Chin Kuo, Psy.D., Rumiko Okada, Ph.D., Jeffrey Tirengel, Psy.D.
- 23 **Emotional Intelligence, Asian Values, and Optimism as Predictors of Help-Seeking Behavior Among Asians and Asian Americans**
Presenters: Nina Lei, M.S., John Pellitteri, Ph.D.
- 24 **Ethnic Identity as a Moderator of the Acculturative Stress-Depression Link among South Asian International Students**
Presenters: Ankita Krishnan, B.A., David Rollock, Ph.D., Pan Priscilla Lui, M.A.
- 25 **Ethnic Identity, Racial/Ethnic Experiences, and College Stress: A Person-Centered Approach**
Presenters: Li Lin, M.S., Christopher Nguyen, M.S., Lori Snyder, Ph.D.
- 26 **Examining the Factor Structure of the RaLES across Gender and Nativity**
Presenters: Christina Thai, M.S., Alvin Alvarez, Ph.D., Matt Miller, Ph.D.
- 27 **Experiences of Distress for 1.5th and 2nd Generation Asian Americans**
Presenters: Hyunji Lee, Regilda Anne Romero, Ph.D., Ernest Bordini, Ph.D.
- 28 **Exploring the Roles of Mental Health and Cultural Factors on Parenting Behaviors in Asian Immigrant Parents**
Presenters: Kim-Thien Nguyen, Austin Yu, Sida Bai, Suzanne Cheng, Timothy Diep, Cindy Huang, Ph.D., Nolan Zane, Ph.D.
- 29 **"How Filipino Are You?" Accurate Measurement of Enculturation in Filipino American Communities**
Presenters: Arwin Cotas, M.A., Alicia del Prado, Ph.D., Crystal Faith Cajilog, B.A.
- 30 **Initial Psychometric validation of a Culture-Specific Stigma Measure for Chinese Immigrants with Mental Illness**
Presenters: Jeffrey Wong, B.A., Debbie Huang, M.P.H., Jenny Shen, B.S., Yuqi Chen, B.S., Chengyun Teng, B.S., Jazmine Wong, B.A.
- 31 **Intersecting identities: Life Experiences of Lesbian and Gay Asian Americans after Coming Out**
Presenter: Hui Xie
- 32 **Latent Profiles of Discrimination and Ethnic Socialization Among Asian American Youth**
Presenters: Lisa Kiang, Ph.D., Andy Supple, Dan Wang, Gaby Stein, Laura Gonzalez
- 33 **Looking at both sides: Cultural orientations' and perceived ethnic discrimination's effect on mental health**
Presenters: David Nguyen B.A., Christopher Liang, Ph.D., Alvin Alvarez, Ph.D.
- 34 **Measurement Invariance of the Internalized Racism in Asian Americans Scale (IRAAS)**
Presenters: Andrew Young Choi, M.A., Hotaka Maeda, M.S., Jennifer Bordon, M.A.
- 35 **Mental Health Experiences in the Lao Community**
Presenters: Saloni Dev, M.A., Xiang Zhou, M.A., Xueting Wu, JunHong Chen, Larissa Lai, Aanchal Modani
- 36 **Merging Cultures: Navigating Mental Health in a Multicultural Landscape**
Presenter: Nicole Wong, B.A.

- 37 **Modern-day Slavery in Hong Kong: Work Experience and Psychological Wellbeing of Domestic Helper**
Presenters: Ka Yan Danise Mok, M.A., Nathan Rhees
- 38 **More Than Just Novelty: Exploring Contributing Factors to Asian Athletes Sport Participation**
Presenters: Claire Reclonado-Baclay, Lorelei Smith, Mike Hoang
- 39 **Motivations and Experiences of Asian Americans, Latinos, and African Americans in Higher Education**
Presenters: Tiana Osborne, Zachary T Goodman, Tseng Vang, Zahara Hussain, Greg M. Kim-Ju
- 40 **Obstructive Sleep Apnea: Are Asians at Risk?**
Presenter: Michi Fu, Ph.D.
- 41 **Psychotherapy Utilization and Presenting Concerns among Pacific Islanders and Asian American Students in a University Counseling Center**
Presenters: Ofa Hafoka, G.E. Kawika Allen, Ph.D.
- 42 **Pubertal timing and psychological adjustment among adopted Korean American adolescents**
Presenters: Christine Wu, B.S., Richard Lee, Ph.D., Adam Beaupre, B.S.
- 43 **Reciprocal Relations between Social Self-Efficacy and Loneliness among Chinese International Students**
Presenters: William Tsai, Ph.D., Kenneth Wang, Ph.D., Meifen Wei, Ph.D.
- 44 **Relations Of Demographical Variables, Racism Related Stress And Mental Health Symptomology Among Asian Americans**
Presenters: Thomas Chan, Charles Liu, M.A., Karen L. Suyemoto, Ph.D.
- 45 **Relevancy of School Counselors' Training, Ethnicity, and Experience to Comfort and Challenge Levels of Counseling Asian Americans**
Presenter: Yih-Jiun Shen, D.Ed.
- 46 **Sikhphobia**
Presenter: Nina Kaur, M.A.
- 47 **Sociocultural Facets of Asian International Students' Drinking Motives in the College Context: Examining Social Norm Perception, Language Discrimination, and Need to Belong**
Presenter: Kristi Eustice, B.A.
- 48 **Stigma, Culture, and HIV and AIDS in New York City: A Quantitative Assessment within Chinese Immigrant Populations**
Presenters: Jingyang Mei, B.S., Jeffrey Wong, B.A., Xiang Zhou, B.S., Debbie Huang, M.P.H., Yu Ting Pak, B.A., Liang Yi Wong, B.A., Selma Zaki, B.A.
- 49 **The effects of friends in adopted Korean Americans' parental cultural socialization and ethnic identity**
Presenters: Claire Park, Richard Lee, Ph.D., Adam Beaupre, B.S.
- 50 **The Impact of Migration on Mental Health Outcomes and Psychological Well-Being of Asian Indian International Students in the United States: Why Did We Even Move Here?**
Presenters: Kshipra Jain, M.A., L.P.C.
- 51 **The Role of Racial Identity and Feminine Norms on Life Satisfaction among Asian American Young Adult Women**
Presenters: Lauren Pandes-Carter, BS, Derek Iwamoto, Ph.D., Jennifer Brady, M.S., Aylin Kaya, M.S., Athena Park, B.S.
- 52 **The Role Racism, Acculturative Stress, and Racism-Coping Self-Efficacy on Asian American Mental Health**
Presenters: Nancy Truong, B.A., Yun Lu, M.A., Jeffrey Yeung, M.A., Christina Thai, M.A., Xu Li, M.Ed., Brian Taehyuk Keum, M.A., Gloria Huh, M.A., Matthew Miller, Ph.D.
- 53 **Together Again: Examining the Attachment Experiences of Chinese American Transnational Left-Behind Children**
Presenter: Meiyang Kadaba, M.A.
- 54 **Translation of an instrument to screen for depression, anxiety, and PTSD in Laotian, Cambodian, and Vietnamese American communities: A report from the field**
Presenters: Tai Chang, Ph.D., Matthew Witter, M.A., Natalie Ah Soon, M.P.H.
- 55 **Understanding Neurasthenia, a cultural bound syndrome, among Chinese Immigrants in the United States**

Presenters: Yu Chak Sunny Ho, M.A., Laurence Chan, M.A.

56 **What do Asian Americans prefer in their leaders?**

Presenters: Arthur Roh, M.S., Jean Lau Chin, Ed.D.

AWARDS & ANNOUNCEMENTS: 4:50PM – 5:00PM

Room 320

Announcements of the Poster Awards, Student Travel Award winners, Division Awards, and the *Asian American Journal of Psychology* Best Paper Award. We will also be honoring the contributions of the outgoing Executive Committee Members.

MENTOR-MENTEE RECEPTION: 5:00PM – 6:PM

Various Rooms

This reception is a prime opportunity for Asian American students and early career professionals to network with more experienced professionals. Using a semi-structured format, students and professionals will be matched along similar topics of interest indicated on the registration questionnaire. Mentors will remain in designated tables/rooms for professional development topic areas, whereas mentees may alternate tables/rooms and mentors during the hour to meet their needs.

AAPA BANQUET: 7:00PM – 10:00PM

Aloy Modern Thai

Please make sure that you have received your banquet tickets from Registration and remember to bring your tickets to the banquet venue!


THE 2017 AAPA CONVENTION

Are you so excited about this year that you're ready to sign up to help at next year's convention? That sounds like someone we want on our team! Next year's AAPA Convention will be held in **Washington, DC!** If you are interested in joining us, please email Gloria Wong at gloria.wong@unlv.edu.



STAY CONNECTED!

Connect your social networks to this year's programming. Tweet [#aapa2016](https://twitter.com/aapa2016) and follow [@AAPAonline](https://twitter.com/AAPAonline) to let your friends and family know what you're excited about at this year's Convention! Plus, follow convention photos and team status updates by "Liking" Asian American Psychological Association on Facebook. And there's **free Wi-Fi!**

If you are a student, find us on Facebook and stay tuned for exciting updates and happenings with the Asian American Psychological Association Division on Students (AAPA DoS)! Don't forget to "Like" our page! 

THANK YOU TO ALL OF OUR 2016 CONVENTION VOLUNTEERS!

Proposal Reviewers

Mary-Jo Bautista, Adam Beaupre, Laura Berssenbrugge, Lynn Bufka, Jocelyn Buhain, Stephanie Carrera, Laurence Chan, Nadine Chang, Tiffany Chang, Roy Chen, Yuchuan Chen, Jacks Cheng, Andrew Choi, Sally Chung, Alexandra DeGrange, Jingyi Gu, Susan Han, Yaqub Hansia, Sunny Ho, Kun-Yueh Hsieh, Kean Hsu, Valerie Jackson, Linda Juang, Angela Kim, Ann Kim, Grace Kim, Elsa Lee, Hannah Lee, Liz Lee, Matt Lee, Karen Li, Ya-Shu Liang, Liang Liao, Kelly Liao, Yunkyong Loh, Yun Lu, Glenn Masuda, Yiqing Miao, Jeffrey Mio, Shruti Mukkamala, David Nguyen, Hannah Nguyen, Regilda Anne Romero, Frances Shen, Florensia F. Surjadi, Joshua Gabriel Tobias, Nancy Truong, Lei Wang, Yi-Chen Jenny Wu, Jiwon Yoo, Jin Zhao

Poster Session Judges

Kawika Allen, Stephanie Cheung, Richelle Concepcion, E.J.R. David, Jan Estrella, Grace Kim, Matt Lee, Sumie Okazaki, Richard Shin, Ulash Thakore-Dunlap, Nellie Tran, Marty Wong, Larry Yang, Byron Zamboanga

Convention Day Volunteers

Annabelle Atkin, Inthava Bounpraseuth, Shirley Sut Yee Chan, Thomas Chan, Suzanne Cheng, Andrew Young Choi, Arwin Cotas, Justine Fan, Jennifer Ho, Preet Kaur, Taehyuk Brian Keum, Marina Khan, Mijin Kim, Christina Lam, Charles Liu, Yunkyong Loh, Taylor Lott, Yun Lu, Ka Yan Danise Mok, David Nguyen, Thanh Nguyen, Claire Park, Amber Pham, Nathan Rhees, Sruthi Swami, Todeh Toomians, Nancy Truong, Kanisha Wilson, Christine Wu, Naweed Yusufzai,

SPECIAL ACKNOWLEDGMENTS

Thank you to the following officers and leaders for their service to AAPA

OUTGOING AAPA EXECUTIVE COMMITTEE MEMBERS

Helen Hsu, Ph.D., *Vice President*
Pei-Wen (Winnie) Ma, Ph.D., *Secretary/Historian*
Hyung Chol (Brandon) Yoo, Ph.D., *Board of Directors*
Fanny Ng, Ph.D., *Board of Directors (Student Rep)*
Karen Suyemoto, Ph.D., *Council of Rep (CoR) Chair*
Stephanie Pituc, Ph.D., *Communications Officer*
Nori Lim, Ph.D., *Convention Co-Chair, 2015 and 2016*

ASIAN AMERICAN JOURNAL OF PSYCHOLOGY EDITORIAL TEAM

Bryan S. K. Kim, Ph.D., *Editor*
Chu Y. Kim-Prieto, Ph.D., and Tiffany Yip, Ph.D.,
Associate Editors
Doris F. Chang, Ph.D., *Case Studies Editor*
Winnie W. S. Mak, Ph.D., *International Section Editor*
John Moritsugu, Ph.D., *Book Reviews Editor*

2015-16 Asian American Psychological Association Executive Committee

President

Kevin Nadal, Ph.D.

Membership

Frances C. Shen, Ph.D.

AAJP Editor-in-Chief

Bryan S. Kim, Ph.D.

VP/President Elect

Helen Hsu, Psy.D.

Communications

Stephanie Pituc, Ph.D.

Board of Directors

Hyung Chol (Brandon) Yoo, Ph.D.

Past President

Sumie Okazaki, Ph.D.

Secretary/Historian

Pei-Wen (Winnie) Ma, Ph.D.

Ulash Dunlap, LMFT

Glenn I. Masuda, Ph.D.

Finance

Razia F. Kosi, LCSW-C

Council of Rep (CoR) Chair

Karen Suyemoto, Ph.D.

Fanny Ng, M.A. (Student Representative)

2016 AAPA CONVENTION - SCHEDULE AT A GLANCE

Registration, Breakfast, and Early Bird Activity: Room 320 Lounge, 7:30am – 8:30am

Book Drive: Room 320 Lounge, 7:30am – 5pm

Welcome Remarks and Announcements: Room 320, 8:45am – 9:00am

KEYNOTE ADDRESS *(Room 320, 9:00am – 10:00am)*

Location	BREAKOUT SESSION 1 10:10 – 11:10AM	BREAKOUT SESSION 2 11:20AM – 12:20PM	LUNCH MEETINGS 12:20PM – 1:30PM	BREAKOUT SESSION 3 1:40 – 2:40PM
Room 320 <i>Baerresen Ballroom</i>	A Multi-Modal Intervention Model for South Asian American Women Survivors of Intimate Partner Violence*	AAPI Therapist Self-Disclosure of Identities*	-----	Empirically-Based Strategies for Enhancing Cultural Inclusion in Evidence-Based Treatments*
Room 440/540 <i>Adirondack</i>	AAPA Early Career Award Presentation	AAPA Dissertation Panel	<i>Division on Students</i>	AAPA Leadership Fellowship Program
Room 442 <i>John Good</i>	Gay Filipino Men: Dating/Relationships in Post-Same Sex Marriage Ruling Era	Intersectionality at Work: LGBTQ Asian Americans in the Media, Clinical Encounters, and Academia	<i>Division on LGBTQ Issues</i>	Advocacy, Workforce Development, Cultural Relevance and More!
Room 640 <i>Zenith</i>	Visibility and Invisibility II: Critical Encounters and Empowerment	From Graduate Student to Early-Career Professional: Lessons and Wisdom among AAPI Women	<i>Division on Practice</i>	The Future of Asian American Psychology
Room 444 <i>LoRaine Good</i>	-----	Asian-Heritage Parents, Racial Socialization, and Discrimination: When a Research Topic Becomes Real	<i>Division on South Asian Americans</i>	Multiracial Asian Americans: The Meanings of being Mixed
Room 329 <i>Senate Chambers</i>	Cultural Socialization: Blending Cultures and Ethnic Boundaries	We Broke the Bamboo Ceiling, Now What? Lessons Learned from Filipino American Leaders	<i>Division on Filipino Americans</i>	Across Psychological Borders: Engaging South Asian Americans in Multidisciplinary Mental Health Work

CLOSING KEYNOTE: *Special Panel on Social Justice (Room 320, 2:40pm – 3:40pm)*

Snack Break: Room 320 Lounge, 3:40pm – 3:50pm

Poster Session: Room 320, 3:50 – 4:50pm

Awards and Announcements: Room 320, 4:50pm – 5:00pm

Mentor-Mentee Reception: Various Rooms, 5:00pm – 6:00pm

2016 AAPA CONVENTION COMMITTEE

Convention Co-Chairs:

Banquet/Entertainment Co-Chairs:

Book Sale Co-Chairs:

Mentor-Mentee Co-Chairs:

Poster Co-Chairs:

Program Co-Chairs:

Registration Co-Chairs:

Session Co-Chairs:

Volunteer Co-Chairs:

Nori Lim & Gloria Wong-Padoongpatt

Sumin Na & Jennifer Hsia

Michelle Lee, Kayi Hui & Minji Yang

Vivi Hua & Wells Ling

Kim Langrehr & Sunny Ho

Elsa Lee & Ya-shu Liang

Ankita Krishnan & Will Tsai

Anne Saw & Huijun Li

Chu Hui Cha, Chu Kim-Prieto & Wilson To